

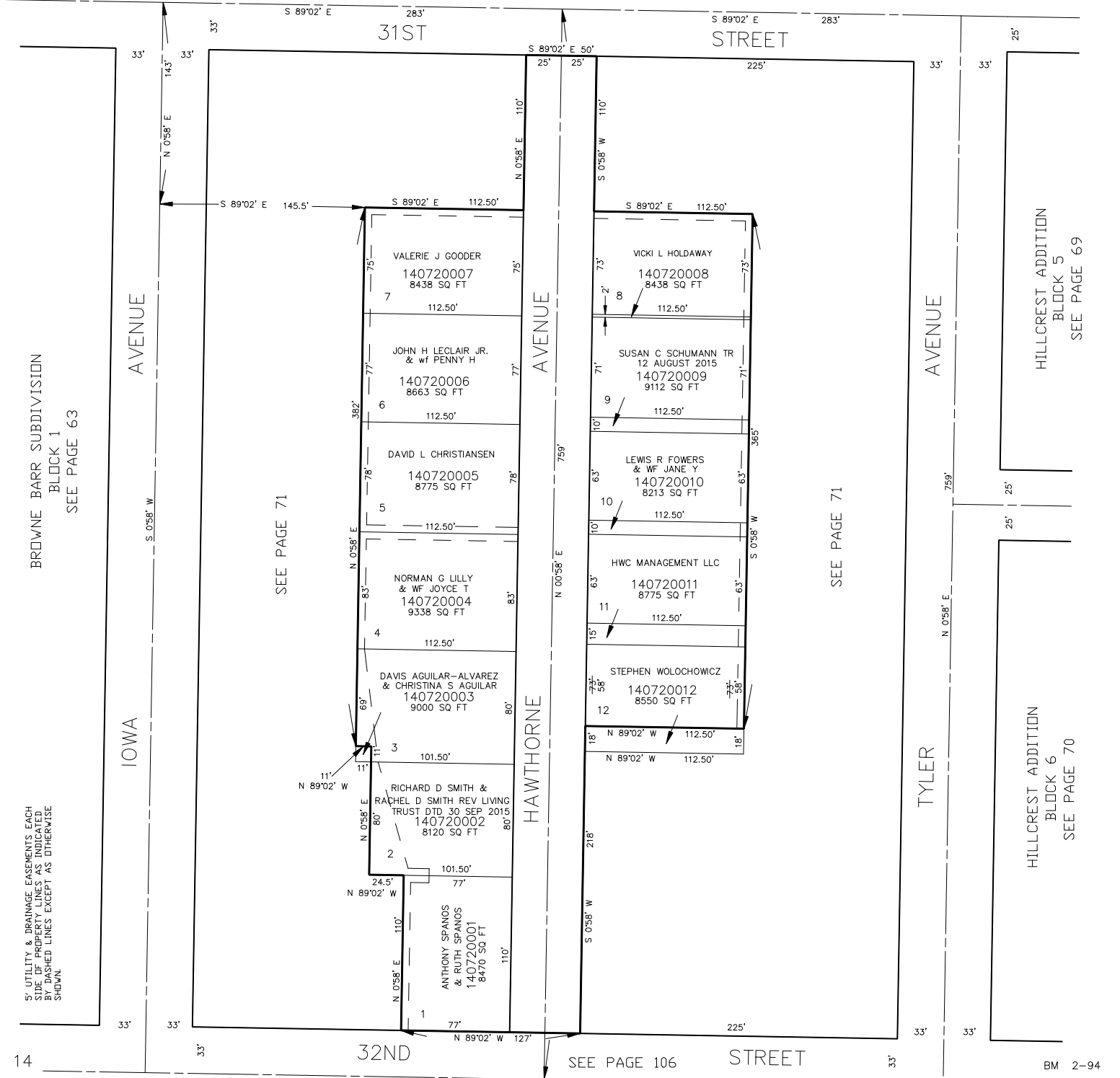
PART OF THE S.W. 1/4, SEC. 34, T.6N., R.1W., S.L.B. & M.  
**OAK WOOD HEIGHTS**

TAXING UNIT: 25

SEE PAGE 105

IN OGDEN CITY  
 SCALE 1" = 50'

FOR COMPLETE ENG DATA SEE  
 ORIGINAL DEDICATION PLAT IN  
 BOOK 13, PAGE 28 OF RECORDS.



BROWNE BARR SUBDIVISION  
 BLOCK 1  
 SEE PAGE 63

HILLCREST ADDITION  
 BLOCK 5  
 SEE PAGE 69

HILLCREST ADDITION  
 BLOCK 6  
 SEE PAGE 70

5' UTILITY & DRAINAGE EASEMENTS, EACH  
 SIDE OF PROPERTY LINES AS INDICATED  
 BY DASHED LINES EXCEPT AS OTHERWISE  
 SHOWN.